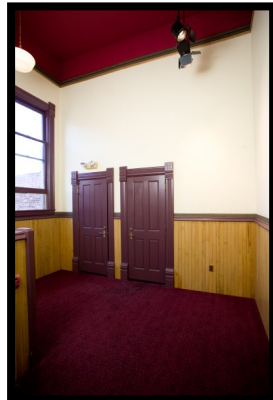
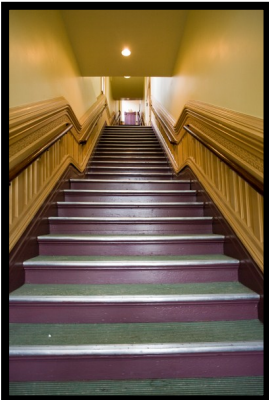


STUDIO 49

THIS LUXURIOUS 2600 SQUARE FOOT PENTHOUSE LOCATED ON THE TOP FLOOR OF THE HISTORICAL ELKS BUILDING ABOVE THE SILVERWATER CAFÉ IS NOW AVAILABLE FOR MEETINGS, DANCES, BIRTHDAY PARTIES, WEDDING CEREMONIES, RECEPTION AND REHEARSAL DINNERS, PRIVATE PARTIES & EVENTS.



STUDIO 49 WILL ACCOMMODATE UP TO 54 PEOPLE WITH BEAUTIFUL VIEWS OF DOWNTOWN PORT TOWNSEND, THE BAY AND THE OLYMPIC MOUNTAIN RANGE.

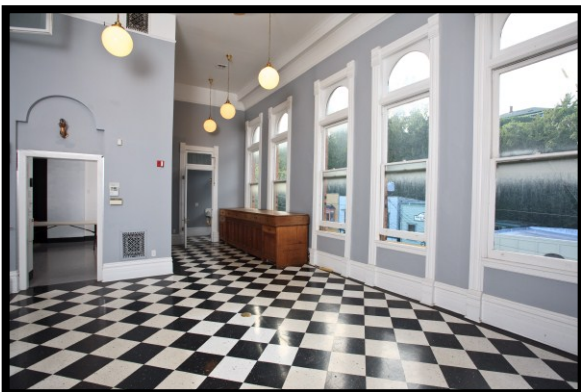


STAIRCASE
AND
ELEVATOR
ACCESS
(ADA ACCESSIBLE)



16X19' FOYER

THE PERFECT
SPACE FOR
COCKTAILS AND
HORS D'OEUVRES





28x38' BANQUET ROOM

DOUBLE DOOR ENTRY FROM FOYER, ORIGINAL HARDWOOD FLOORS, DRAPED FLOOR TO CEILING WINDOWS, SOUND SYSTEM AND ADJUSTABLE LIGHTING.

INCLUDES TABLES, CHAIRS, DINNERWARE, GLASSWARE, KITCHENETTE, LOFT, AND TWO BATHROOMS.

FULL CATERING SERVICES & EVENT COORDINATING AVAILABLE FROM THE SILVERWATER CAFÉ.



MEZZANINE LEVEL WITH PRIVATE LOFT OVERLOOKS BANQUET ROOM AND FOYER.

MEZZANINE IS IDEAL SPACE FOR A LIVE BAND OR DJ & THE LOFT MAKES A PERFECT DRESSING ROOM OR SPECIAL PLACE FOR THE BRIDE & GROOM TO TAKE A MOMENT.

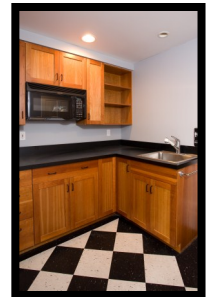
WE ARE READY TO ASSIST YOU IN PLANNING YOUR NEXT SPECIAL EVENT.

360.385.6448

WWW.SILVERWATERCAFE.COM

STUDIO49@SILVERWATERCAFE.COM

237 TAYLOR ST ~ PORT TOWNSEND ~ WA ~ 98368



TWO SPACIOUS BATHROOMS AND KITCHENETTE